

## PAC-ARMS

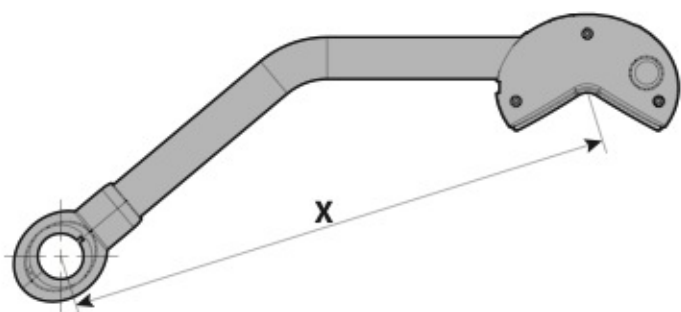
- I BRACCETTI A FISSAGGIO RAPIDO**  
Specifici per portabicli Pyro - Radius e adatti anche per tutti i portabicli con telaio ø30 mm.
- GB QUICK-FIT ARMS**  
Specific for bicycle carriers Pyro - Radius and suitable also for any ø30 mm frame bicycle carriers.
- F SUPPORTS DE FIXATION RAPIDE**  
Spécifique pour les porte-vélos Pyro-Radius et adapté à tous les porte-vélos avec cadre ø30 mm.
- D QUICK-FIT ARME**  
Speziell für Pyro - Radius Fahrradträger und passend für alle Fahrradträger mit ø30 mm Rahmen.
- E SOPORTES DE FIJACIÓN RÁPIDA**  
Específicos para portabicicletas Pyro - Radius y adecuado para todos los portabicicletas con marcos de ø30 mm.



MAX  
**15** KG



TESTATO E CERTIFICATO - TESTED AND APPROVED  
GEPRÜFT UND ZERTIFIZIERT

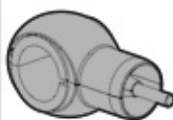
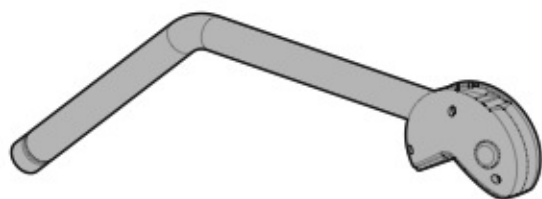


**S** X = 16cm

**M** X = 32cm

**L** X = 50cm

**CONTENUTO • CONTENT • CONTENU • INHALT • CONTENIDO**

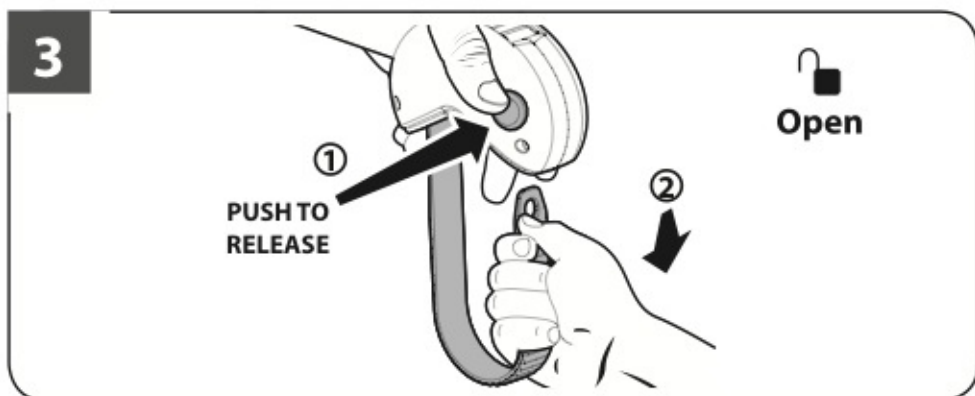
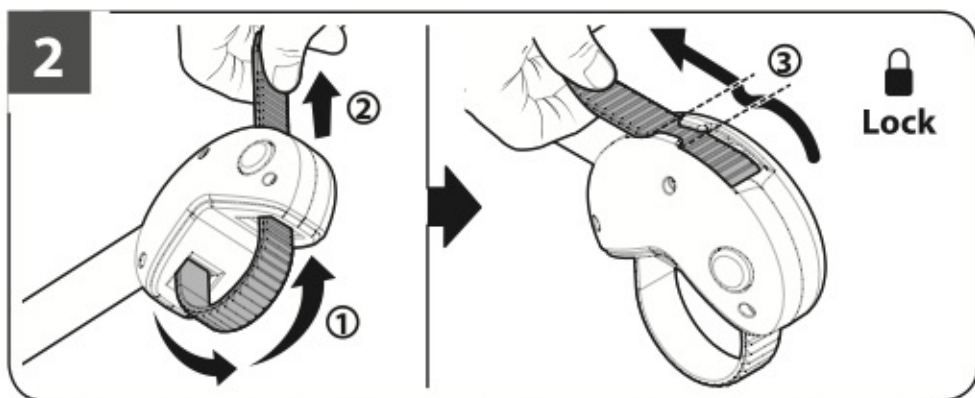
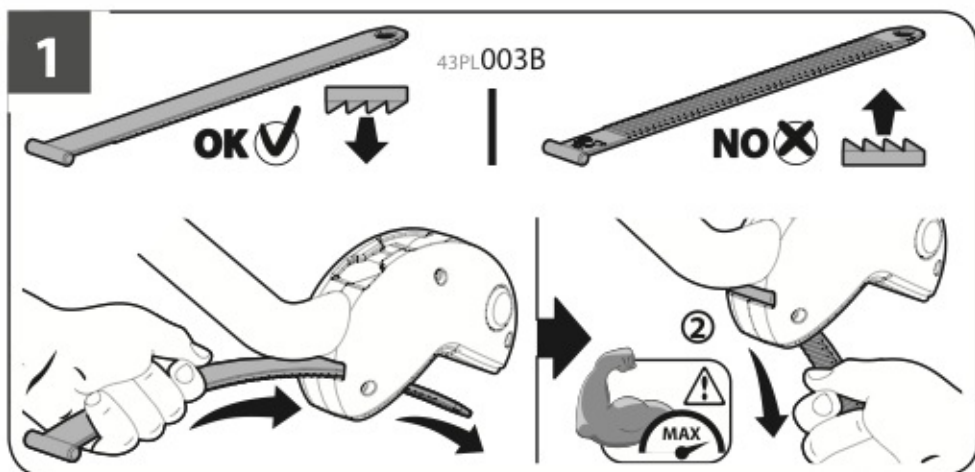


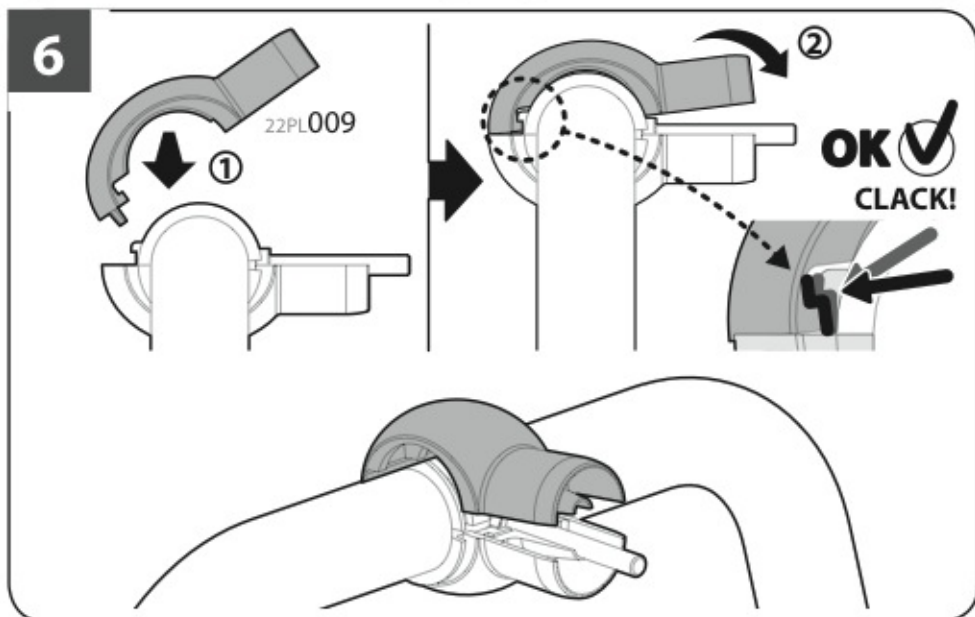
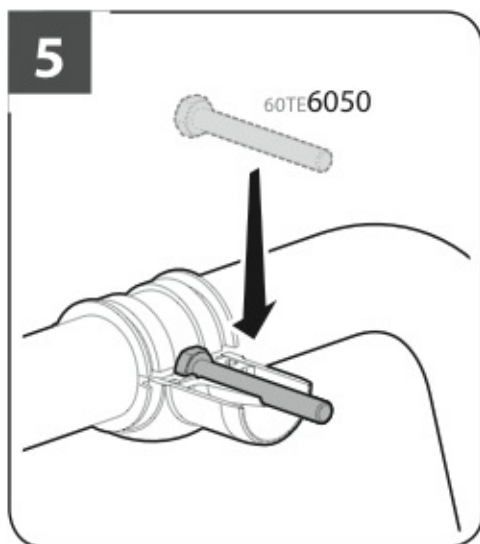
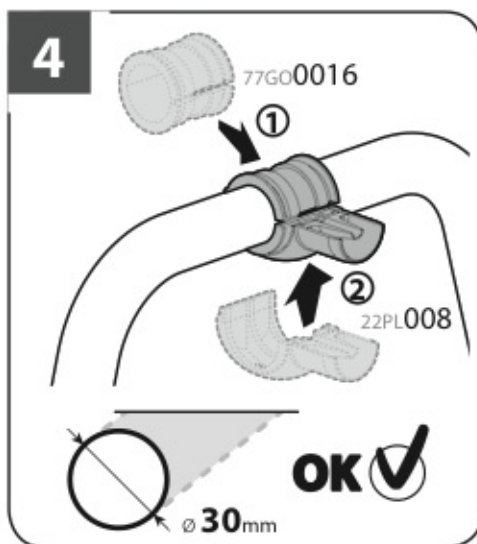
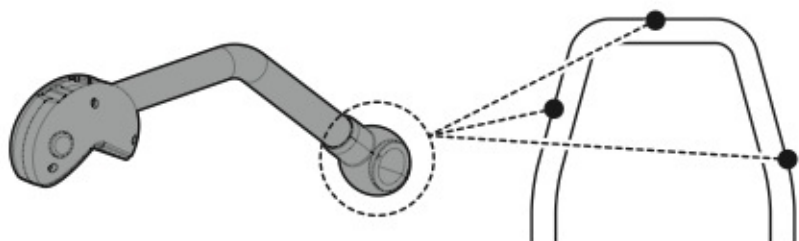
**SET**



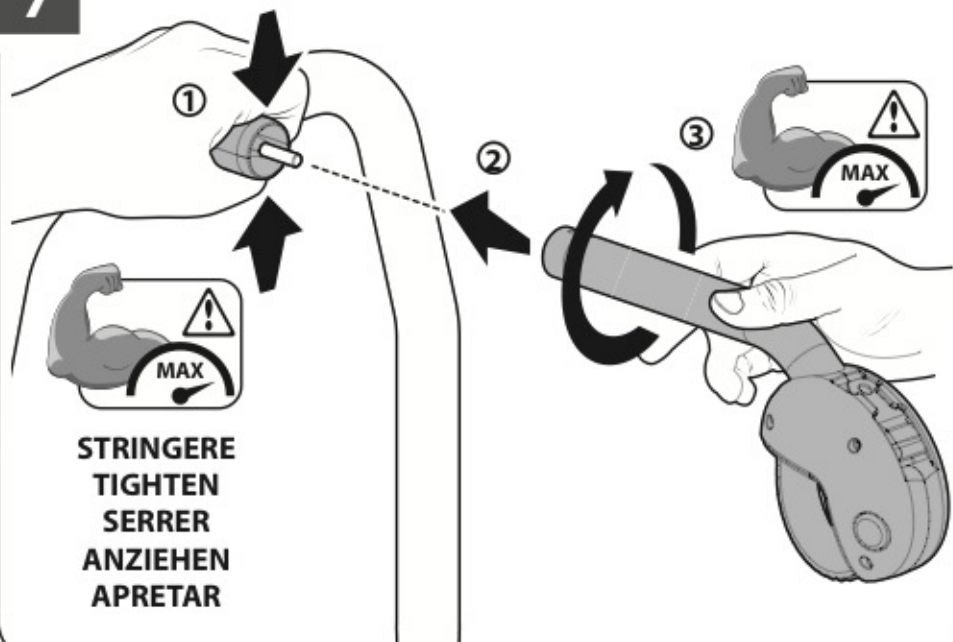
<b>N50901</b>	<b>S</b>	<b>1</b> pz / pc	<b>1</b> set / pc	<b>X</b>
<b>N50902</b>	<b>M</b>	<b>1</b> pz / pc	<b>1</b> set / pc	<b>X</b>
<b>N50903</b>	<b>L</b>	<b>1</b> pz / pc	<b>1</b> set / pc	<b>X</b>
<b>N50911</b>	<b>S</b>	<b>1</b> pz / pc	<b>1</b> set / pc	✓
<b>N50912</b>	<b>M</b>	<b>1</b> pz / pc	<b>1</b> set / pc	✓
<b>N50913</b>	<b>L</b>	<b>1</b> pz / pc	<b>1</b> set / pc	✓
<b>N50914</b>	<b>S + M</b>	<b>2</b> pz / pcs	<b>2</b> set / pcs	✓
<b>N50915</b>	<b>S + M + L</b>	<b>3</b> pz / pcs	<b>3</b> set / pcs	✓

ISTRUZIONI DI ASSEMBLAGGIO • ASSEMBLY INSTRUCTIONS  
INSTRUCTIONS D'ASSEMBLAGE • AEBNBAUANWEISUNG  
INSTRUCCIONES DE ENSAMBLADO

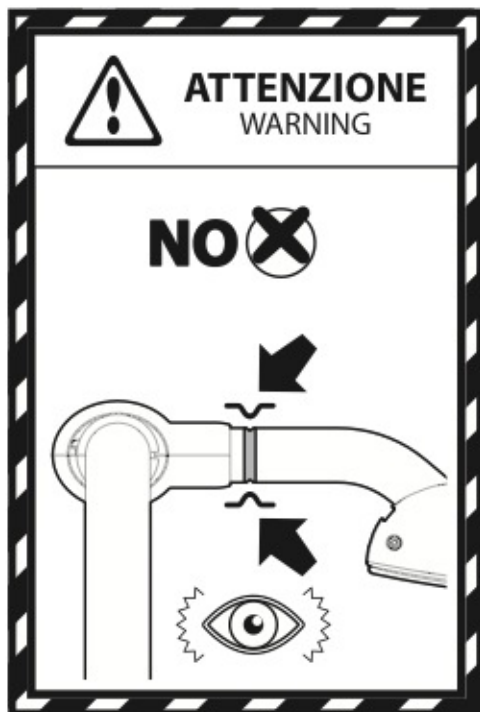
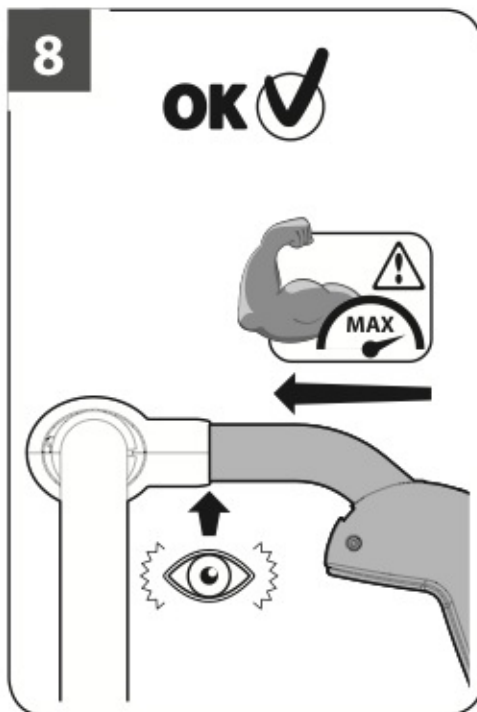




7

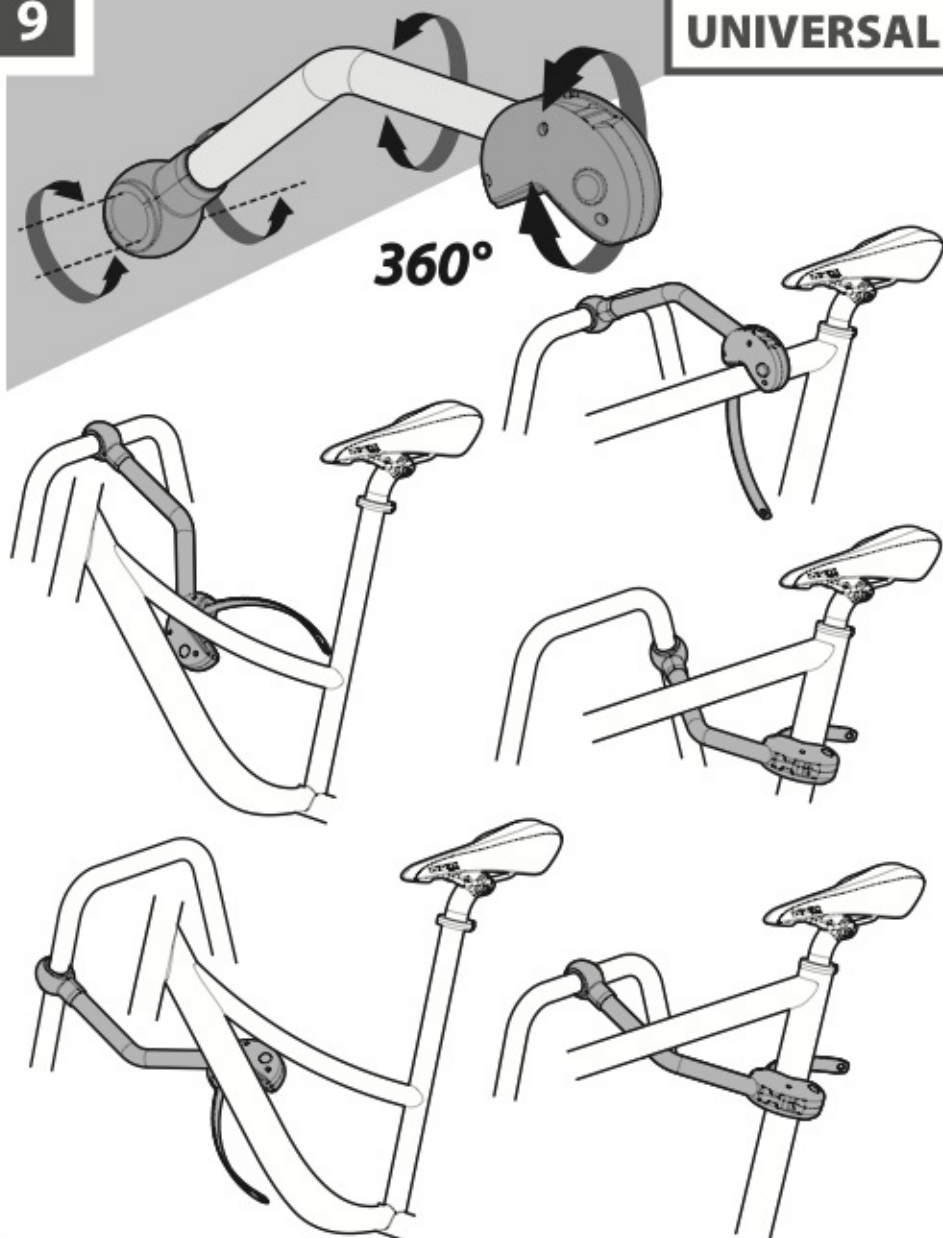


8

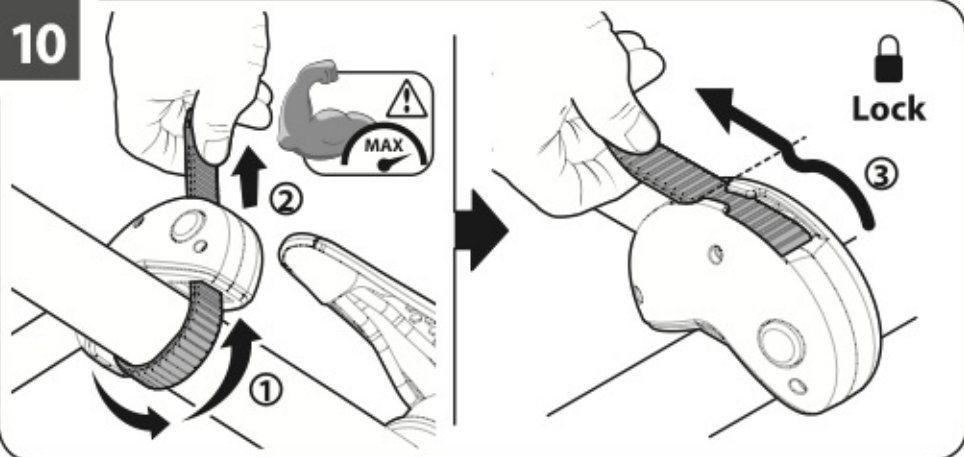


9

UNIVERSAL

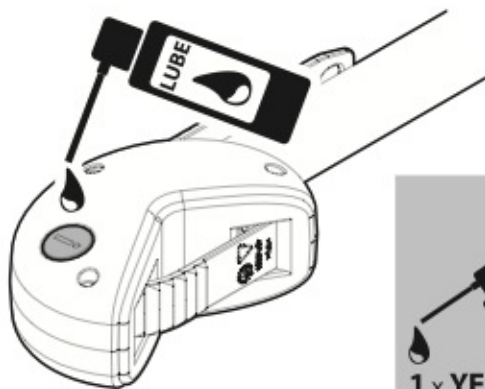
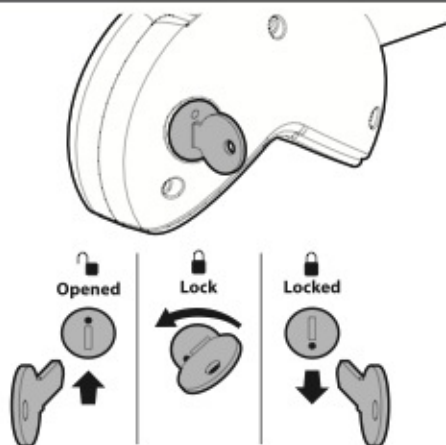


10



11

- ① Per    ② Für  
 ③ For    ④ Para  
 ⑤ Pour



# NORDRIVE®

TRANSPORT SOLUTIONS

**NORDRIVE® is a registered trademark of  
LAMPA S.p.A.**

Via G. Rossa 53/55, 46019 Viadana (MN) ITALY  
Tel. +39 0375 820700  
UNI EN ISO 9001:2015 Certified Company

**[www.nordrive.it](http://www.nordrive.it)  
[www.lampa.it](http://www.lampa.it)**